

THE CENLA CIRCULAR

CENLAFCU.ORG



Volume 4 - 2025



IN THIS ISSUE

Auto Flash Sale

2x uChoose Rewards

Holiday Skip-a-Pay

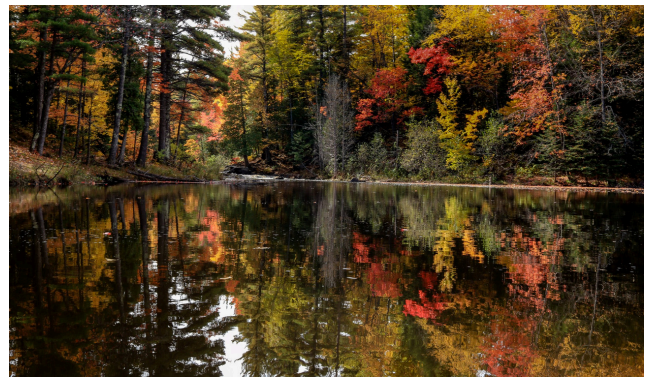
Stocking Stuffing- Fostering
Community

Q3 Success

Holiday Closures

Hello, Fall and Winter!

As the weather cools and the holidays get closer, it's the perfect time to slow down, reflect, and enjoy the season. Whether you're cheering at football games, baking something sweet, or getting ready for cozy winter days, we're thankful to be part of your year. In this issue, you'll find updates, promotions, and ways we're helping our members finish the year strong. Here's to a happy and memorable season ahead!



AUTO FLASH SALE

SEPTEMBER 1, 2025 - OCTOBER 31, 2025

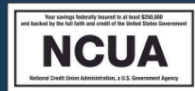
Rates as low as

5% APR.



CENLA
Federal Credit Union
318-445-7388 | CENLAFCU.ORG

Special terms and conditions apply. Additional discounts prohibited for the September 1 - October 31, 2025, Auto Flash Sale, including School Employee Benefit. The September 1 - October 31, 2025, Auto Flash Sale is an across-the-board discount beginning as low as 5.00% APR for new or used autos or refinance. Auto loan must be a new loan to CenLA FCU. Rates based upon credit approval. Must be within CenLA FCU field of membership. Extended terms available during the September 1 - October 31, 2025, Auto Flash Sale. Must be a member of CenLA FCU for loan approval. Down payment may be required. Auto loan must be processed between September 1 - October 31, 2025. Pre-approvals outside of the promotion dates do not qualify.



This holiday season

EARN
2X

uChoose Rewards

Only with your
CenLA FCU



**November 27-
December 31**

Apply for your Visa
Credit Card today!

cenlafcu.org | 318-445-7388

CENLA
Federal Credit Union



Earn 2.00 points per \$1. Minimum spend per transaction is \$1.
Maximum reward per transaction is 10,000 points.
Offer valid from November 27, 2025, to December 31, 2025.



HOLIDAY *Skip-a-Pay*

TAKE A BREAK THIS HOLIDAY SEASON FROM YOUR MONTHLY LOAN PAYMENT

NOVEMBER, DECEMBER, OR JANUARY 2026

\$30 PROCESSING FEE PER LOAN.

REQUEST A SKIP-A-PAY FORM AT YOUR BRANCH OR FIND IT ONLINE AT CENLAFCU.ORG

Only one monthly payment per loan may be deferred during promotion period. All qualifying loans must be current and in good standing. Loans with two late payments out of the last six will NOT qualify for Holiday Skip-A-Pay. Should there be an adverse change in your account status, you may no longer qualify for this offer. Eligible loans include: Signature, Auto, Boat, ATV, Recreational, and Share Secured Loans. Credit Cards, Certificate Loans, Real Estate, Equity Out, Back-to-School, and Real Estate Refinance loans do not qualify. Member status will be verified upon receipt of deferment form. Holiday Skip-a-Pay promotion is for November-December 2025 and January 2026. CenLA FCU must receive Holiday Skip-a-Pay form prior to the payment due date of the month selected to defer payment. Interest will continue to accrue on unpaid loan balance. Interest will be billed as part of final payment. Participation in Holiday Skip-a-Pay extends final loan payment by one month. Any applicable debt protection will not be extended beyond the original maturity date of your loan.

CENLA
Federal Credit Union
318-445-7388 | CENLAFCU.ORG





THIS CHRISTMAS WE ARE STUFFING STOCKINGS FOR *fostering* - COMMUNITY -

BRAND NEW
INDIVIDUALLY PACKAGED
OR LABELED ITEMS
AGES 0-18

DONATE ITEMS AT
ALL BRANCHES
FROM NOVEMBER 1-29

EXAMPLE ITEMS

Card games
Art supplies
Candy
Small books
Bubbles
Stickers
Chalk

Puzzles
Small toys
Small stuffed
animals
Comic books
Swimming goggles
Markers/Crayons

Socks
Underwear
Hair accessories
Sunglasses
Headlamp
Warm hats
Gloves
Water bottle

Lip balm
Shampoo
Toothpaste
Toothbrush
Hairbrush
Deodorant
Shaving cream

COMMUNITY FUN

\$250 CLASSROOM BACK-TO-SCHOOL WINNERS

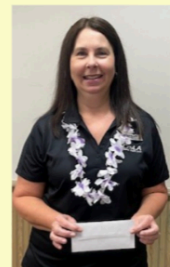
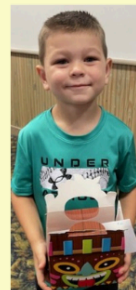
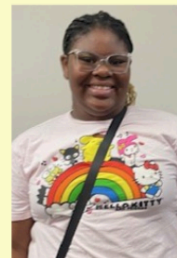
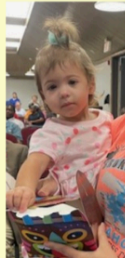
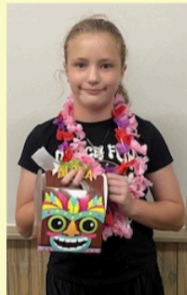
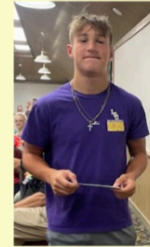


Federal Credit Union

318.445.7388 | CENLAFCU.ORG



ANNUAL MEETING WINNERS!



THANK YOU FOR COMING!

Holiday CLOSURES

October 13 - Columbus Day

November 11 - Veterans Day

November 27 - Thanksgiving Day

November 28 - Day after Thanksgiving

December 24 - Christmas Eve (1/2 Day)

December 25 - Christmas Day

December 26 - Day after Christmas

December 31 - New Year's Eve (1/2 Day)

January 1, 2026 - New Year's Day

CHANGE IN TERMS NOTICE- TRUTH-IN-SAVINGS

Effective December 1, 2025, IRA Share Account Fee

Annual Fee.....	\$25.00 yearly
Enrollment Fee.....	\$10.00 per account



CENLAFCU.ORG | 318-445-7388

LOOKING FOR *help financing?*

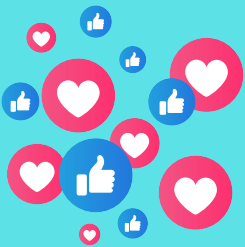
Is it time for your next great adventure?
Let us help you finance a recreational vehicle.

New Golf Carts
All-Terrain Vehicles
Utility Task Vehicles
Side-by-Sides
Trailers
Jet Skis
Motorcycles

New Mowers
Boats & Motors
Travel Trailers
Pop-Up Campers
5th Wheels
Motor Homes
AND MORE



START SAVING FOR THE HOLIDAY SEASON NOW!
OPEN A CHRISTMAS CLUB ACCOUNT WITH ONLY \$5.00



LIKE US ON FACEBOOK
FOLLOW US ON INSTAGRAM



GET YOUR
Visa Gift Cards
HERE!



SAVE DOUGH AND PURCHASE YOUR
VISA GIFT CARDS FOR ONLY A \$3.00
FEE FROM US!

NEVER MISS AN
ANNOUNCEMENT OR
UPDATE!

ADD YOUR EMAIL TO
YOUR ACCOUNT TODAY



VISIT A BRANCH TODAY



Pineville Branch

105 Griffith St.
Pineville, LA 71360

Lobby Hours:

9:00 am - 5:00 pm (Mon-Fri)

Drive Thru Hours:

8:30 am - 5:00 pm (Mon-Fri)
8:00 am - 5:00 pm (First & Last
working days of the month)
9:00 am - Noon (Sat)

Coliseum Branch

6500 Coliseum Blvd.
Alexandria, LA 71303

Lobby Hours:

9:00 am - 5:00 pm (Mon-Fri)

Drive Thru Hours:

8:30 am - 5:00 pm (Mon-Fri)
8:00 am - 5:00 pm (First & Last
working days of the month)

Main Branch

708 Jackson St.
Alexandria, LA 71301

Drive Thru Hours:

Temporarily Closed

Virtual Branch

cenlafcu.org

Bank with us 24/7 online at our
[Virtual Branch](#).

Download the [CenLA FCU app](#)
today and bank on the go.

BOARD MEMBERS

Mr. Joseph Moreau, Chairman
Ms. Debra Drayton, First Chair
Mrs. Phyllis Holsomback, Secretary/Treasurer
Mr. Terry Smith, Board Member
Ms. Sandra Caston, Board Member
Mr. Thomas Davis, Board Member
Mr. Raymond Doucet, Board Member
Mrs. Rebecca Prestridge, Board Member
Ms. Vallery Albritton, Board Member

SUPERVISORY COMMITTEE

Ms. Vallery Albritton, Chair
Mrs. Bonnie Lord
Mr. Donald Welch

MANAGEMENT

Mr. Lewis A. McBryde III, CEO
Mrs. Rhonda Harvey, Executive VP
Mrs. Tammy Mitchell, VP of Accounting



*Thank you for reading this edition of
The Cenla Circular!*

Avery Thiels
Marketing Director
318-427-6111
athiels@cenlafcu.org