

# THE CENLA CIRCULAR

CENLAFCU.ORG



Volume 2 - 2025



## IN THIS ISSUE

2025 CenLA Scholarships

Auto Flash Sale

Summer Spending 2X Points

Teacher Appreciation Week

Summer Food Drive

Holiday Closures

---

As the days grow longer and the world bursts into bloom, we embrace the fresh energy of spring! This season represents renewal, growth, and new beginnings—whether in nature, our communities, or our own lives.

We are stepping into spring with fresh ideas and a rejuvenated spirit!





# SCHOLARSHIP PROGRAM 2025

**SIX TOTAL SCHOLARSHIPS AT  
\$1,000.00 EACH**

## HOW TO QUALIFY

- ▶ You must be a member of CenLA FCU in good standing
- ▶ Current High School Senior, undergrad student, or school employee
- ▶ Registered to attend college, university, or technical school

**Nominate yourself or someone you  
know between March 17 - May 15**

**NOMINATIONS ACCEPTED AT [CENLAFCU.ORG](https://cenlafcu.org)**

VISIT OUR WEBSITE FOR OFFICIAL RULES

 318-427-6111  [cenlafcu.org](https://cenlafcu.org)  [athiels@cenlafcu.org](mailto:athiels@cenlafcu.org)

# AUTO FLASH SALE

RATES AS LOW AS

**5%** APR.

**APRIL 1, 2025 - MAY 31, 2025**

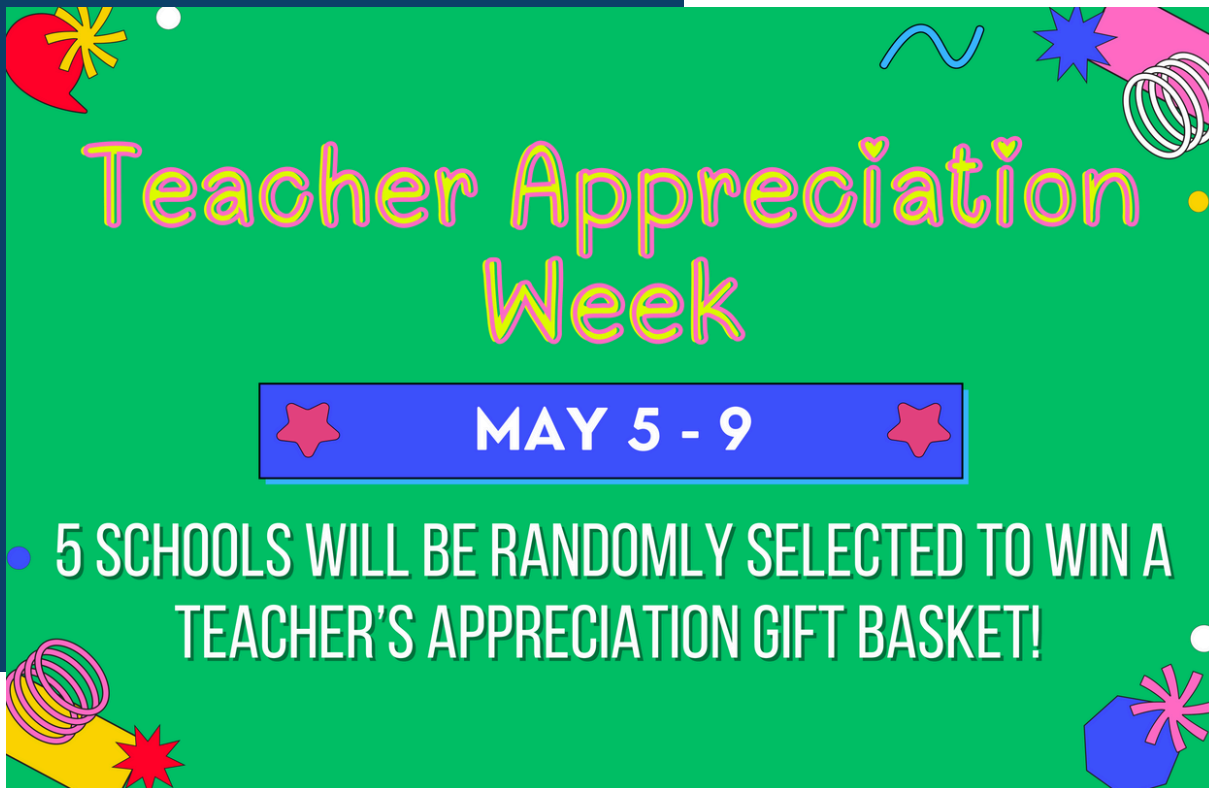
**318-445-7388 | CENLAFCU.ORG**



Special terms and conditions apply. Additional discounts prohibited for the April 1-May 31, 2025, Auto Flash Sale including School Employee Benefit. The April 1-May 31, 2025, Auto Flash Sale is an across-the-board discount beginning as low as 5.00% APR for new or used autos or refinance. Auto loan must be a new loan to CenLA FCU. Rates based upon credit approved. Must be within CenLA FCU field of membership. Extended terms available during the April 1-May 31, 2025, Auto Flash Sale. Must be a member of CenLA FCU for loan approval. Down payment may be required. Auto loan must be processed between April 1-May 31, 2025. Pre-approvals outside of the promotion dates do not qualify.



FOLLOW US ON SOCIAL MEDIA FOR MORE DETAILS ON THESE UPCOMING PROMOTIONS!



Teacher Appreciation Week

MAY 5 - 9

- 5 SCHOOLS WILL BE RANDOMLY SELECTED TO WIN A TEACHER'S APPRECIATION GIFT BASKET!

The graphic features a green background with colorful confetti and streamers. The text is in a playful, rounded font. A blue banner with red stars contains the dates 'MAY 5 - 9'. Below, a white text box with a blue border lists the promotion details.



**CENLA**  
Federal Credit Union

Summer Food Drive

HELP FIGHT HUNGER IN OUR COMMUNITY

May 1 - May 31

BENEFITING THE FOOD BANK OF CENTRAL LOUISIANA

FOOD DRIVE

The graphic has a warm, orange-to-yellow gradient background with palm fronds in the corners. It features the CENLA logo, the event title in large blue and orange letters, a green banner with the mission statement, and the dates in blue. At the bottom, there's an illustration of a man in a yellow shirt and red cap holding a 'FOOD DRIVE' bag, standing next to several boxes of food and a recycling bin. The Food Bank logo is in the bottom left.

# Holiday CLOSURES

**April 18 - Good Friday**

**April 19 - Day after Good Friday**

**May 26 - Memorial Day**

**June 19 - Juneteenth Day**



**DID YOU KNOW YOUR MEMBERSHIP WITH US COMES  
WITH FREE NOTARY SERVICES?**

**GIVE US A CALL TODAY FOR MORE INFORMATION  
318-445-7388**



**DID YOU KNOW YOU CAN PROTECT YOURSELF FROM  
MISSING IMPORTANT DOCUMENTS BY HAVING YOUR  
STATEMENTS EMAILED TO YOU?**

**SIGN UP FOR E-STATEMENTS ON VIRTUAL BRANCH**



# NEVER MISS AN ANNOUNCEMENT OR UPDATE!

ADD YOUR EMAIL TO  
YOUR ACCOUNT TODAY



Think Before You **Click!**

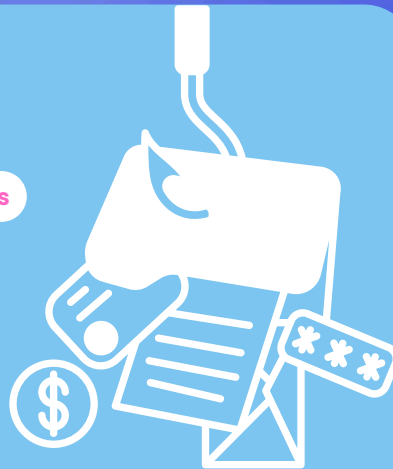
# BEWARE OF PHISHING SCAMS!

Look for Spelling Errors

Check the Sender's Address

Don't Click Strange Links

Stay Smart, Stay Secure!



# VISA Purchase Alerts

Visa Purchase Alerts sends you real-time<sup>1</sup> text or email alerts when you pay<sup>2</sup> with your Visa card



**[CLICK HERE TO SIGN UP](#)**

**Download our app now and use Virtual Branch today!**

Banking with us right at your fingertips. Download the app today to check balances faster, pay bills for free, transfer funds, and deposit money the smarter way.

**DOWNLOAD NOW**

318-445-7388 cenlafcu.org



Virtual Branch users can access their eligible accounts from a mobile phone using mobile banking. Check account balances and review recent activity 24 hours a day, 7 days a week. Texting for balance and history is also supported by mobile banking.

\*Texting and data rates may apply.

# VISIT A BRANCH TODAY



## Pineville Branch

105 Griffith St.  
Pineville, LA 71360

### Lobby Hours:

9:00 am - 5:00 pm (Mon-Fri)

### Drive Thru Hours:

8:30 am - 5:00 pm (Mon-Fri)  
8:00 am - 5:00 pm (First & Last  
working days of the month)  
9:00 am - Noon (Sat)

## Coliseum Branch

6500 Coliseum Blvd.  
Alexandria, LA 71303

### Lobby Hours:

9:00 am - 5:00 pm (Mon-Fri)

### Drive Thru Hours:

8:30 am - 5:00 pm (Mon-Fri)  
8:00 am - 5:00 pm (First & Last  
working days of the month)

## Main Branch

708 Jackson St.  
Alexandria, LA 71301

### Drive Thru Hours:

Temporarily Closed

## Virtual Branch

[cenlafcu.org](http://cenlafcu.org)

Bank with us 24/7 online at our  
[Virtual Branch](#).

Download the [CenLA FCU app](#)  
today and bank on the go.

## BOARD MEMBERS

Mr. Joseph Moreau, Chairman  
Ms. Debra Drayton, First Chair  
Mrs. Phyllis Holsomback, Secretary/Treasurer  
Mr. Terry Smith, Board Member  
Ms. Sandra Caston, Board Member  
Mr. Thomas Davis, Board Member  
Mr. Raymond Doucet, Board Member  
Mrs. Rebecca Prestridge, Board Member  
Ms. Vallery Albritton, Board Member

## SUPERVISORY COMMITTEE

Ms. Vallery Albritton, Chair  
Mrs. Bonnie Lord  
Mr. Donald Welch

## MANAGEMENT

Mr. Lewis A. McBryde III, CEO  
Mrs. Rhonda Harvey, Executive VP  
Mrs. Tammy Mitchell, VP of Accounting



*Thank you for reading this edition of  
The Cenla Circular!*

Avery Thiels  
Marketing Director  
318-427-6111  
[athiels@cenlafcu.org](mailto:athiels@cenlafcu.org)